



Beetle Clip Invisible

Zero mask over light as invisible



Model for Choice

Item NO.	BCI10XB-3W	BCI0BB-4	BCI10BXB-3W
Type	strip to power	strip to strip joint	strip to strip bridge
Voltage & Current	DC3~24V / 3.5A	DC3~24V / 5.5A	DC3~24V / 3.5A
Material	PVC, PC, Copper	PC, Copper	PVC, PC, Copper
Workable Wire Gauge	20 AWG / 0.54 mm ²	/	20 AWG / 0.54 mm ²
Head Dimension L*W*H	15.6*11.6*3.3mm	15.6*11.6*3.3mm	15.6*11.6*3.3mm
Strip Light Width		10 mm	
Pin Quantity	3 Pin	4 Pin	3 Pin
Strip Light Color	CCT	RGB / CCT	CCT
Strip Light IP Rating		IP20	



BCI10XB-3W



BCI0BB-4
Fit both RGB and CCT



BCI10BXB-3W

Beetle Clip Invisible

LED Strip Connector

Model for Choice

Item NO.	<i>BCI5XB-2W</i>	<i>BCI5BB-2</i>	<i>BCI8BXB-2W</i>
Type	<i>strip to power</i>	<i>strip to strip joint</i>	<i>strip to strip bridge</i>
Voltage & Current	<i>DC3~24V / 3.5A</i>	<i>DC3~24V / 5.5A</i>	<i>DC3~24V / 3.5A</i>
Material	<i>PVC, PC, Copper</i>	<i>PC, Copper</i>	<i>PVC, PC, Copper</i>
Workable Wire Gauge	<i>20 AWG / 0.54 mm²</i>	<i>/</i>	<i>20 AWG / 0.54 mm²</i>
Head Dimension L*W*H	<i>15*6.5*3.3mm</i>	<i>15*6.5*3.3mm</i>	<i>15*6.5*3.3mm</i>
Strip Light Width		<i>5 mm</i>	
Pin Quantity		<i>2 Pin</i>	
Strip Light Color		<i>Single Color</i>	
Strip Light IP Rating		<i>IP20</i>	



BCI5XB-2W-F20ABR

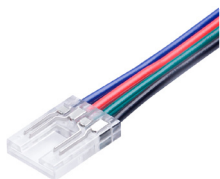


BCI5BB-2



BCI5BXB-2W-F20ABR

Item NO.	<i>BCI10XB-4W</i>	<i>BCI10BB-4</i>	<i>BCI10BXB-4W</i>
Type	<i>strip to power</i>	<i>strip to strip joint</i>	<i>strip to strip bridge</i>
Voltage & Current	<i>DC3~24V / 3.5A</i>	<i>DC3~24V / 5.5A</i>	<i>DC3~24V / 3.5A</i>
Material	<i>PVC, PC, Copper</i>	<i>PC, Copper</i>	<i>PVC, PC, Copper</i>
Workable Wire Gauge	<i>20 AWG / 0.54 mm²</i>	<i>/</i>	<i>20 AWG / 0.54 mm²</i>
Head Dimension L*W*H	<i>15.6*11.6*3.3mm</i>	<i>15.6*11.6*3.3mm</i>	<i>15.6*11.6*3.3mm</i>
Strip Light Width		<i>10 mm</i>	
Pin Quantity		<i>4 Pin</i>	
Strip Light Color	<i>RGB</i>	<i>RGB / CCT</i>	<i>RGB</i>
Strip Light IP Rating		<i>IP20</i>	



BCI10XB-4W



BCI10BB-4
Fit both RGB and CCT



BCI10BXB-4W

Model for Choice

Item NO.	BCI8XB-2W-F20ABR	BCI8BXB-2W-F20ABR
Type	strip to power	strip to strip bridge
Voltage & Current	DC3~24V / 3.5A	DC3~24V / 3.5A
Material	PVC, PC, Copper	PVC, PC, Copper
Workable Wire Gauge	20 AWG / 0.54 mm ²	20 AWG / 0.54 mm ²
Outer Dimension L*W*H	15.6*9.6*3.3mm	15.6*9.6*3.3mm
Strip Light Width	8 mm	
Pin Quantity	2 Pin	
Strip Light Color	Single Color	
Strip Light IP Rating	IP20	



BCI8XB-2W-F20ABR



BCI8BXB-2W-F20ABR

Item NO.	BCI10XB-2W-F20ABR	BCI10BXB-2W-F20ABR
Type	strip to power	strip to strip bridge
Voltage & Current	DC3~24V / 3.5A	DC3~24V / 3.5A
Material	PVC, PC, Copper	PVC, PC, Copper
Workable Wire Gauge	20 AWG / 0.54 mm ²	20 AWG / 0.54 mm ²
Outer Dimension L*W*H	15.6*11.6*3.3mm	15.6*11.6*3.3mm
Strip Light Width	10 mm	
Pin Quantity	2 Pin	
Strip Light Color	Single Color	
Strip Light IP Rating	IP20	



BCI 10XB-2W-F20ABR



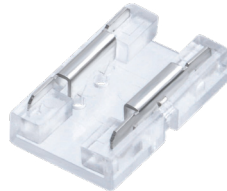
BCI 10BXB-2W-F20ABR

Model for Choice

Item NO.	BCI 8XB-2W	BCI 8BB-2	BCI 8BXB-2W
Type	strip to power	strip to strip joint	strip to strip bridge
Voltage & Current	DC3~24V / 3.5A	DC3~24V / 5.5A	DC3~24V / 3.5A
Material	PVC, PC, Copper	PC, Copper	PVC, PC, Copper
Workable Wire Gauge	20 AWG / 0.54 mm ²	/	20 AWG / 0.54 mm ²
Head Dimension L*W*H	15.6*9.6*3.3mm	15.6*9.6*3.3mm	15.6*9.6*3.3mm
Strip Light Width		8 mm	
Pin Quantity		2 Pin	
Strip Light Color		Single Color	
Strip Light IP Rating		IP20	



BCI 8XB-2W



BCI 8BB-2

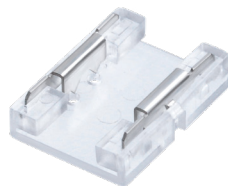


BCI 8BXB-2W

Item NO.	BCI 10XB-2W	BCI 10BB-2	BCI 10BXB-2W
Type	strip to power	strip to strip joint	strip to strip bridge
Voltage & Current	DC3~24V / 3.5A	DC3~24V / 5.5A	DC3~24V / 3.5A
Material	PVC, PC, Copper	PC, Copper	PVC, PC, Copper
Workable Wire Gauge	20 AWG / 0.54 mm ²	/	20 AWG / 0.54 mm ²
Outer Dimension L*W*H	15.6*11.6*3.3mm	15.6*11.6*3.3mm	15.6*11.6*3.3mm
Strip Light Width		10 mm	
Pin Quantity		2 Pin	
Strip Light Color		Single Color	
Strip Light IP Rating		IP20	



BCI 10XB-2W



BCI 10BB-2



BCI 10BXB-2W

Beetle Clip Invisible

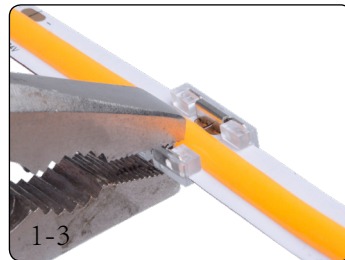
LED Strip Connector

LED density gets higher and higher with pursuit of cozy LED strip lighting effect, which require a brand new fast connective solution to match. Therefore we rethink the essence of strip light connection and design this High Density / COB LED Strip Connector. As a breakthrough it gets rid of the dark area caused by conventional connector between two high density strip light and supports the lighting designers to achieve ultimate lighting effect.

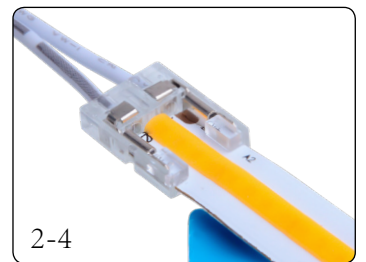
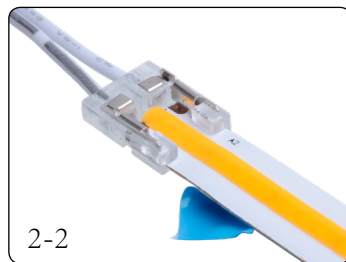


How to use

1.Strip to Strip Joint



2.Strip to Power



Application Effect

